



# Kunststoffverarbeitung GmbH & Co

- Established in 1946
- Founders:  
Benno und Franz Weiss
- Aerea        22.500 m<sup>2</sup>
- Production area    11.000 m<sup>2</sup>
- Management  
Dietmar Weiss  
Dipl. Ing. (FH) Bruno Weiss  
Dipl. Kfm. Jürgen Weiss
- **A family business for more than 60 years**
- [www.weiss-kunststoff.de](http://www.weiss-kunststoff.de)

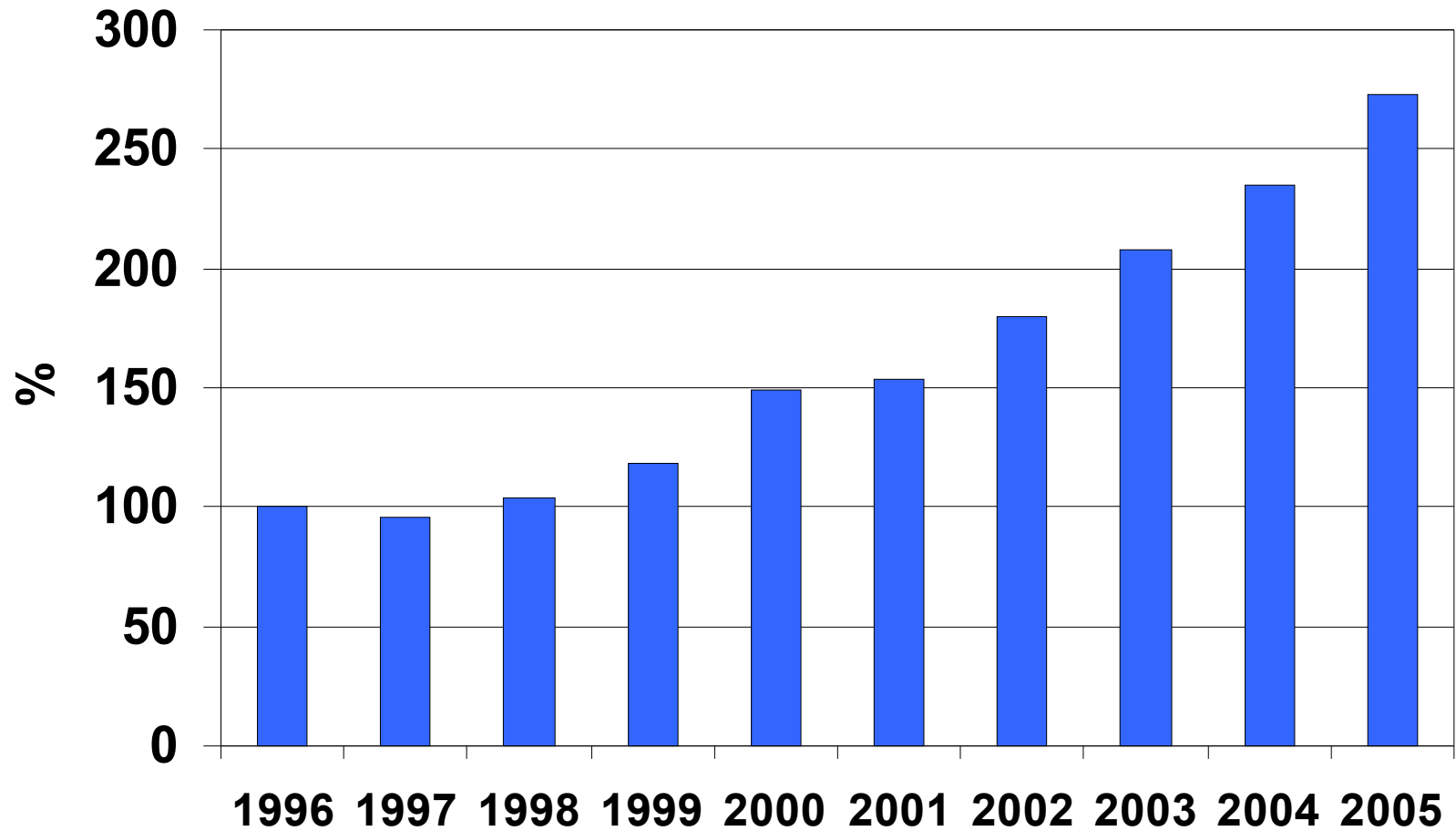




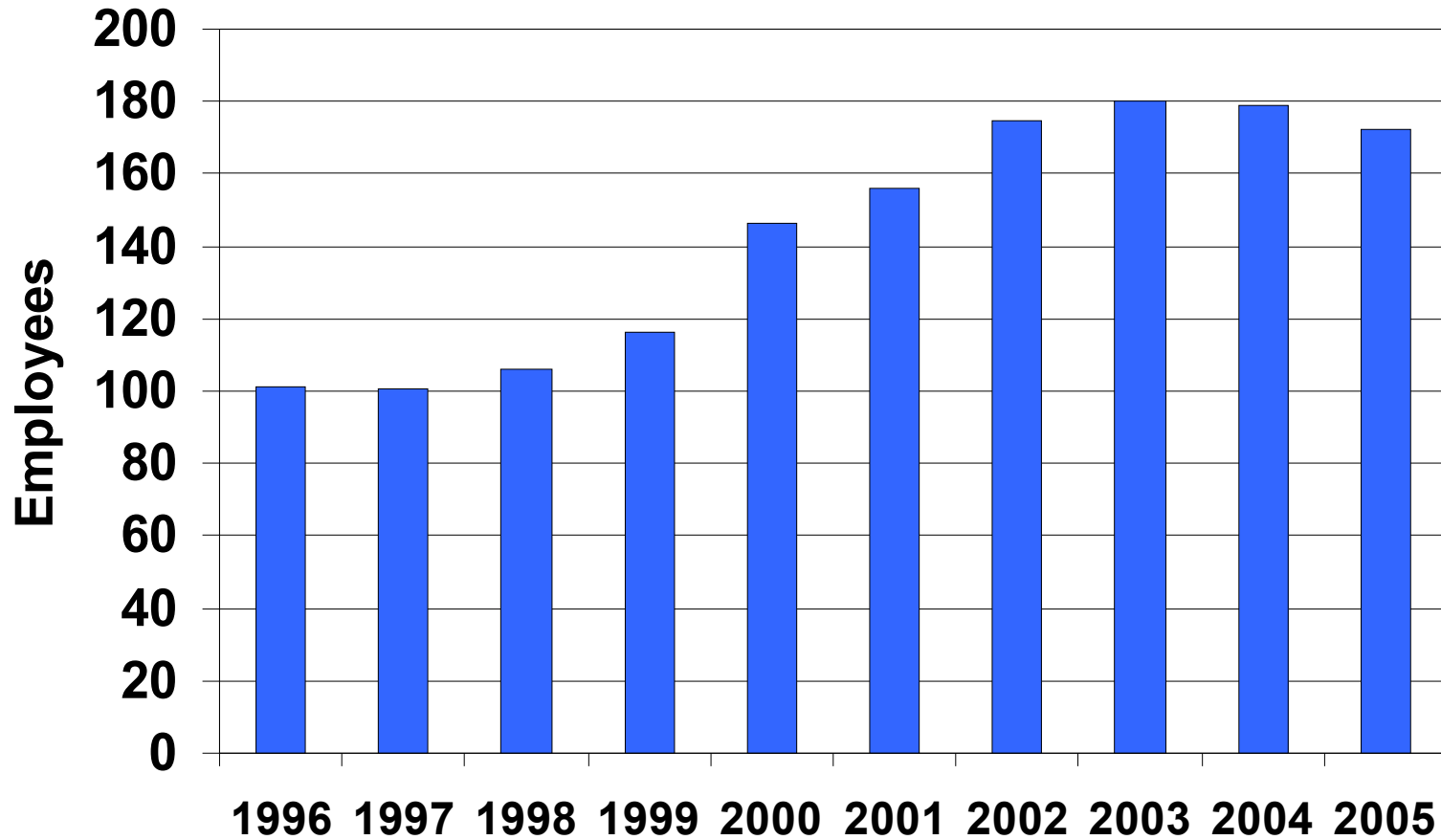
# Company Philosophy

- Independents through the perfect interface of diversified technology and customer requirements
- Flexible, quick response times
- Customer oriented

# Revenues

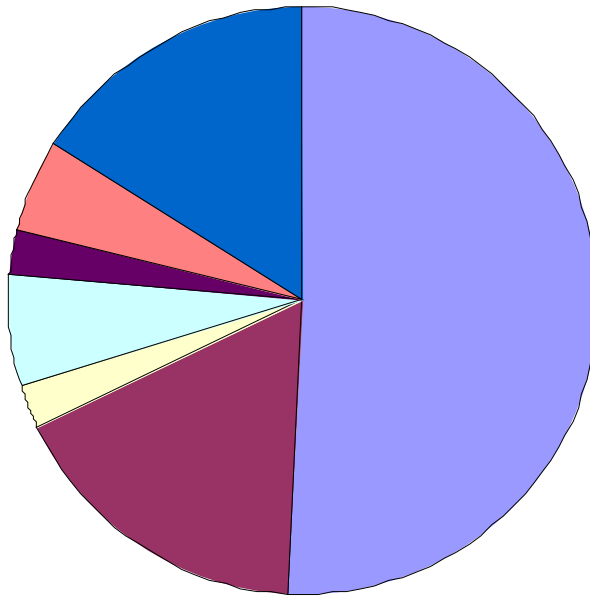


# Employees



# Industries

**Industries**



- Automobile supporting industry
- Machine building
- Sporting goods industry
- Fastening technology
- Communication technology
- Electro-technology and electronic industry
- Miscellaneous

# Major Markets Served

- Automotive support industry
- Machine building
- Precision engineering
- Laboratory and Medical technology
- Chemical Industry
- Sporting goods industry
- Photo – Optics Industry
- Fastening technology

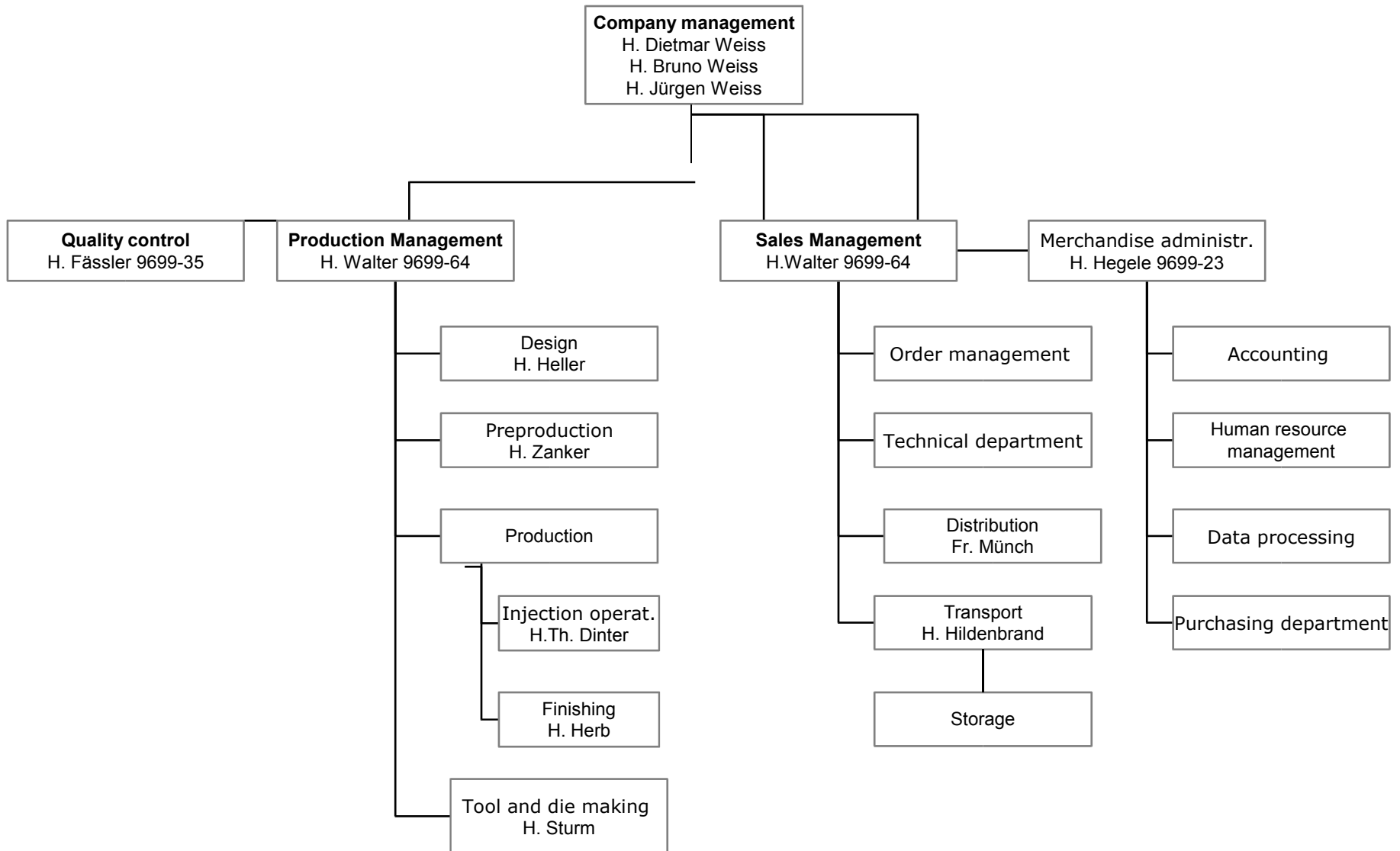


# Company Structure

• Injection molding	86 employees
• Finishing	26 employees
• Injection mold manufacturing	18 employees
• Design	4 employees
• Project management	3 employees
• Sales	6 employees
• <u>Packaging, storage, shipping</u>	<u>29 employees</u>
• Total*	172 employees

\*Figure includes 16 trainees

# Organization

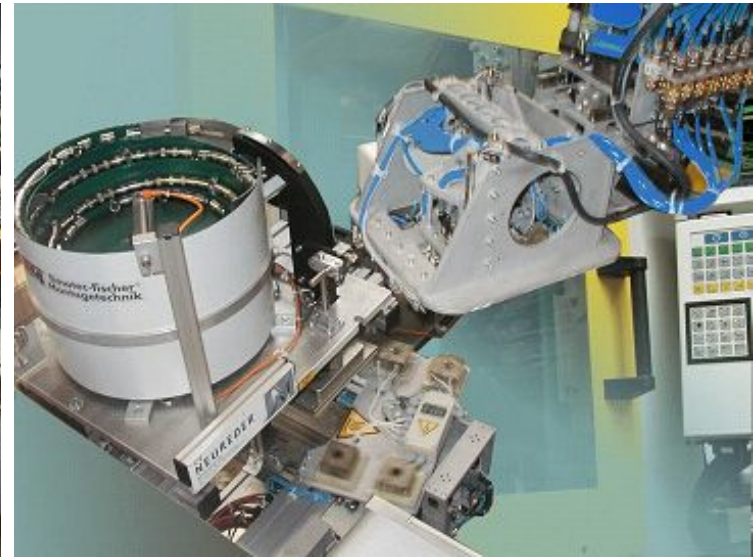




WEISS

# Injection Molding

70 SGM on 4.000 m<sup>2</sup>, 60 Arburg, 7 Klöckner-Ferromatik, 3 Demag  
65 Machines are equipped with handling and robotic systems



Material:	Technical thermoplastics
Shot weight:	0,01 gram – 1.300 gram
Clamping :	up to 4.000 kN
Material transport:	Central material transport and drying operations for all machines



WEISS

# Finishing process

Hot embossing: 3 machines Madag/Gierlich

Tampo-printing: 3 machines Tampoprint

Ultrasonic welding: 1 machine Branson



Internally produced automated assembly,  
20 fully equipped assembly stations,  
Mirror welding





WEISS

# Product Examples





# Product Examples





WEISS

# Mold Construction

The average age of our machines is 5 years  
Form dimensions up to 500 x 800 mm



- 1 Gildemeister CNC lathe NEF 500
- 1 Carstens round sanding machine
- 3 Elb flat grinding machines

In house hardening capability  
1 die touch-up press  
3 Programming terminals



- 4 CNC Universal milling machines
- 1 DMU 80T 5- axle milling machines
- 1 Micron 3-axle high speed milling machines



- 1 Charmilles wire eroding machine
- 2 Multiform vertical eroding machines



WEISS

# Design

4 Unigraphics 3D design workstations



Communication:

IGES, DXF-Files, Disketten, CD, eMail, DXF-Parasolid, STEP,  
90m data cartridge



WEISS

# Quality Management

DIN EN ISO 9001:2000 certified  
In addition we have undergone several  
product and client audits.



3D Measuring device Mitutoyo Euro C  
Contour testing device Mitutoyo Contracer CV 2000  
Optical measuring: Schneider projector  
Roughness measuring device Hommel Teste T1000  
Minolta color measuring device



Precision measuring equipment:

- Slide caliper
- Micrometer
- Devices made to specifications
- Software, SPC control card analysis





# Reference Customers from A-Z,

*“Single Source“ – Design, Production, Packaging, and Shipping*

## A

- ABB Kent Messtechnik
- AEG – Mobile Communication GmbH
- Behr Fahrzeugheizungen
- Bosch Robert GmbH Industrierausrüstung
- Britax Römer GmbH (Kindersicherheit)
- BWT Wassertechnik GmbH
- Fendt Caravan GmbH
- Hilti GmbH
- Hutchinson
- Iveco Magirus
- Knorr-Bremse Systeme
- MAN
- Motometer
- Marker Deutschland GmbH
- Minimax Preussag
- Siemens VDO AG
- Temic GmbH
- Wap Alto
- Weishaupt GmbH, Brenner und Heizsysteme
- Winklhofer Joh. & Söhne GmbH & Co
- WMF AG
- Zeiss Carl

## Z

- and 200 more satisfied customers

# Future Prospects

- Investments in buildings and machinery.
- Expansion of business operations.
- Expansion of customer structure.
- Increased share of sub assembly production.
- Exchange of technical knowledge.
- New technologies (2K technology, gas injection).



# Contact

Address: Weiss Kunststoffverarbeitung GmbH & Co  
Rudolf Diesel Strasse 2-4  
89257 Illertissen  
Germany

Phone: +49(0)7303 9699-0  
Fax +49(0)7303 9699-12

[www.weiss-kunststoff.de](http://www.weiss-kunststoff.de)  
[info@weiss-kunststoff.de](mailto:info@weiss-kunststoff.de)

<u>Department</u>	<u>Name</u>	<u>Telephone</u>	<u>email</u>
Company management	H. Dietmar Weiss	9699-0	
Technical management	H. Bruno Weiss	9699-0	
Company management	H. Jürgen Weiss	9699-0	
Merchandise administration	H. Hegele	9699-23	
Sales department	H. Walter	9699-64	
General office	Fr. Thoma	9699-0	

[info@weiss-kunststoff.de](mailto:info@weiss-kunststoff.de)